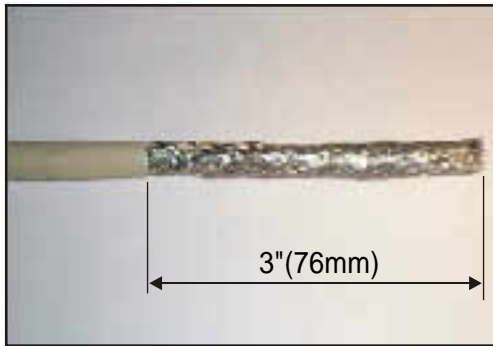
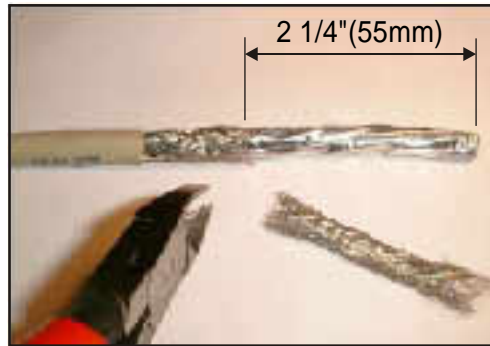


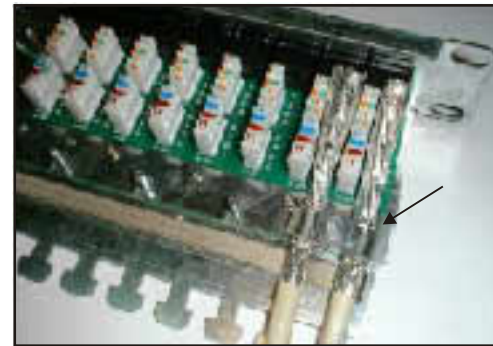
STP Patch Panel Installation Instruction



1. Strip the outer plastic jacket with appropriate length about 1.6 inches (40mm)



2. Cut the copper braid



3-1. If STP cable OD>6.0mm, place cable braid under bracket and cable jacket on mesh-strip, and screw to the earth directly.



3-2. If STP cable OD<=6.0mm, bend back the copper braid and place braid under the bracket. Please place bracket exactly on the braid bending place.



4. Cut each single wire's aluminum foil off subject to terminated IDC position length.



5. Arrange the wires according to the color and use punch down tool terminate each pairs.)



6. After termination completed. Please make sure the aluminum foil fully covers the wires.



7. Thread the cable tie and cut the cable tie. Please do not use too much force to deform the cable.



8. Complete the wires termination and cable mounting.



9. First, insert the cover front side into the panel hood.



10. Push down the cover and snap into knob on each side.



11. If you have more cables to install, please reverse step 9 and step 10 to open the cover.